

CMI-CDSS5040NH-SERIES

Features

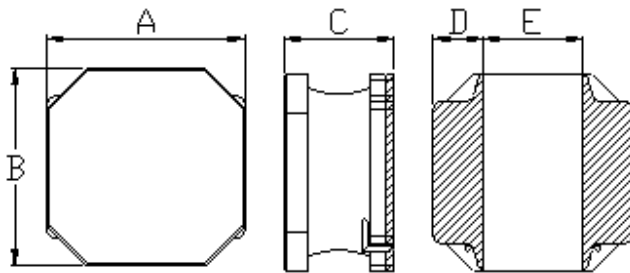
- ▶ High current and low profile.
- ▶ Available tape and reel for auto insertion
- ▶ Simple and Shield structure.
- ▶ RoHS compliant
- ▶ Halogen-Free
- ▶ AEC-Q200 qualified



Applications

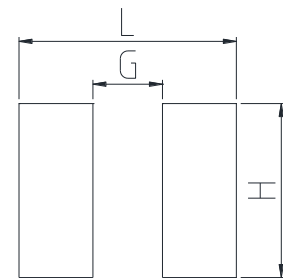
- ▶ Car navigation, car stereo and car accessories only
(Not available for use related to driving, curving, stopping, and the other safety.)

Dimension (Unit:mm)



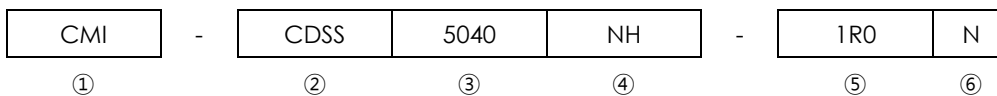
| A | B | C | D | E |
|---------|---------|----------|---------|---------|
| 5.0±0.2 | 5.0±0.2 | 4.0 Max. | 1.5±0.2 | 2.0±0.2 |

Land Pattern (Unit:mm)



| L | G | H |
|-----|-----|-----|
| 5.1 | 2.3 | 4.2 |

Regulation of part number



- ① CoilMaster's initial
- ② Series Name : Car Drum Core Square shape Silver paste type Power inductor
- ③ Core Size (unit:mm)
- ④ Material
- ⑤ Typical inductance value (1.0 uH)
- ⑥ Inductance tolerance (±30%)

• You can also contact us by e-mail : coilmaster@coilmaster.com
 • All specifications are subject to change without notice.
 • Update date : 2022.03.15

Specifications

| Part Number | Inductance (uH) | Tolerance (±) | DCR(mΩ) ±30% | IDC1(A) Max. | IDC2(A) Max. | Test Frequency (Hz) |
|---------------------|-----------------|---------------|--------------|--------------|--------------|---------------------|
| CMI-CDSS5040NH-1R0N | 1.0 | 30% | 12 | 7.35 | 4.90 | 100k |
| CMI-CDSS5040NH-1R2N | 1.2 | 30% | 15 | 6.50 | 4.30 | 100k |
| CMI-CDSS5040NH-1R5N | 1.5 | 30% | 16 | 6.30 | 4.15 | 100k |
| CMI-CDSS5040NH-2R2N | 2.2 | 30% | 19 | 4.90 | 3.80 | 100k |
| CMI-CDSS5040NH-3R3N | 3.3 | 30% | 24 | 3.95 | 3.40 | 100k |
| CMI-CDSS5040NH-4R7M | 4.7 | 20% | 30 | 3.50 | 3.00 | 100k |
| CMI-CDSS5040NH-5R6M | 5.6 | 20% | 35 | 3.00 | 2.80 | 100k |
| CMI-CDSS5040NH-6R8M | 6.8 | 20% | 43 | 2.90 | 2.50 | 100k |
| CMI-CDSS5040NH-100M | 10 | 20% | 64 | 2.35 | 2.10 | 100k |
| CMI-CDSS5040NH-150M | 15 | 20% | 86 | 2.00 | 2.00 | 100k |
| CMI-CDSS5040NH-220M | 22 | 20% | 129 | 1.60 | 1.50 | 100k |
| CMI-CDSS5040NH-330M | 33 | 20% | 188 | 1.30 | 1.20 | 100k |
| CMI-CDSS5040NH-470M | 47 | 20% | 2722 | 1.10 | 1.00 | 100k |
| CMI-CDSS5040NH-680M | 68 | 20% | 400 | 0.90 | 0.80 | 100k |
| CMI-CDSS5040NH-101M | 100 | 20% | 560 | 0.75 | 0.70 | 100k |
| CMI-CDSS5040NH-151M | 150 | 20% | 750 | 0.65 | 0.60 | 100k |
| CMI-CDSS5040NH-221M | 220 | 20% | 1280 | 0.40 | 0.38 | 100k |
| CMI-CDSS5040NH-102M | 1000 | 20% | 6200 | 0.25 | 0.25 | 100k |
| CMI-CDSS5040NH-222M | 2200 | 20% | 13000 | 0.10 | 0.10 | 100k |
| | | | | | | |

- IDC1: When based on the inductance change rate (approximately 30% below in the initial value)
- IDC2: When based on the temperature increase (Temperature increase of approximately 40°C by self heating)
- Operating Temperature Range(including self temperature) : -40°C ~ +125 °C

Ilsan Sales Office (KOREA) +82)31-904-1444
 China Sales Office (CHINA) +86)758-278-7031
 Hungary Sales office (EUROPE) +36)1-899-8543

H.K Sales Office (HONGKONG) +852)2711-5551
 LA Sales Office (USA) +1)866-446-3586

▪ You can also contact us by e-mail : coilmaster@coilmaster.com

- All specifications are subject to change without notice.
- Update date : 2022.03.15

www.coilmaster.com