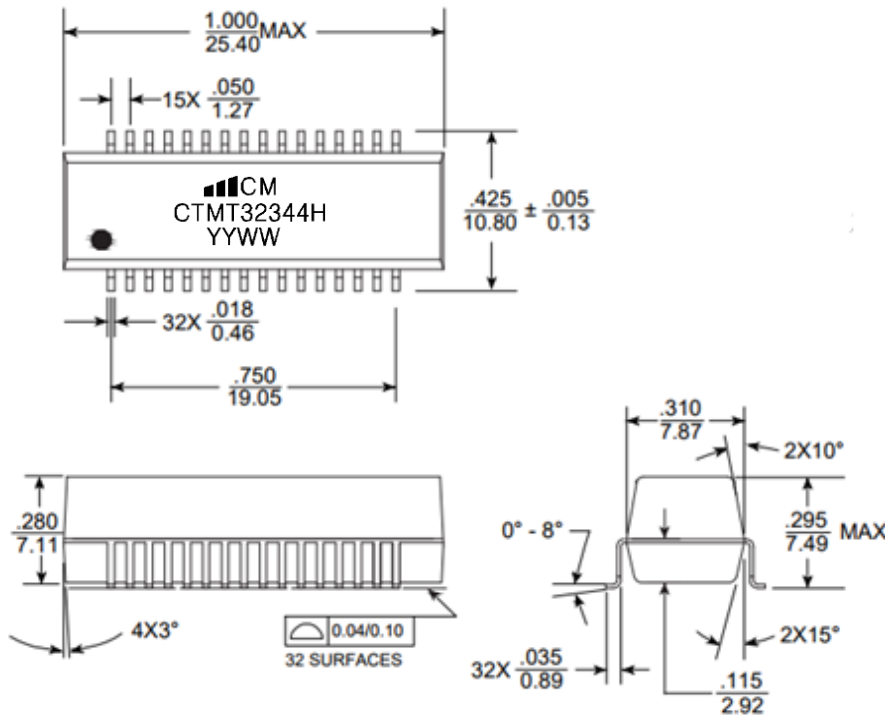


T1/E1/CEPT/ISDN-PRI TRANSFORMERS

RoHS Compliant

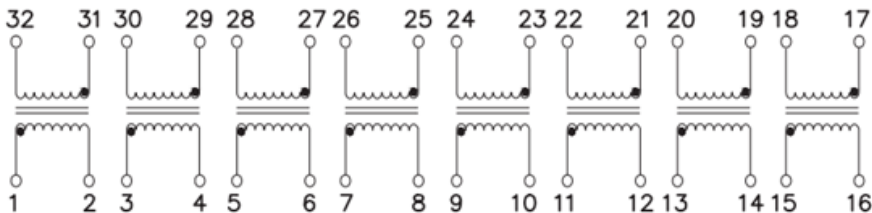
Mechanicals:



Electrical Specifications: @25°C

- Turns Ratio (Pri : SEC ±2%) : 1:1 & 1:2
- OCL Primary @25°C (mH MIN) : 1.2
- L_L : .60 μ H Max.
- Cw/w : 30 pF Max.
- Isolation Voltage : 1500 Vrms MIN
- Primary Pins : 1-2, 5-6, 9-10, 13-14 & 3-4, 7-8, 11-12, 15-16
- Crosstalk : -60 dB typically
- Operating temperature of -40°C to +85°C

Schematics:



www.coilmaster.com

Modify Note:
1.Original

*Specification Subject to Change Without Notice

