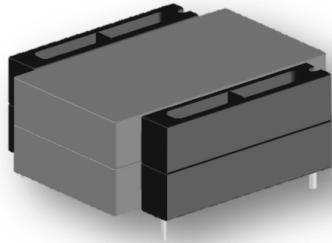


# CMI-MMPB383214-1750



## Picture



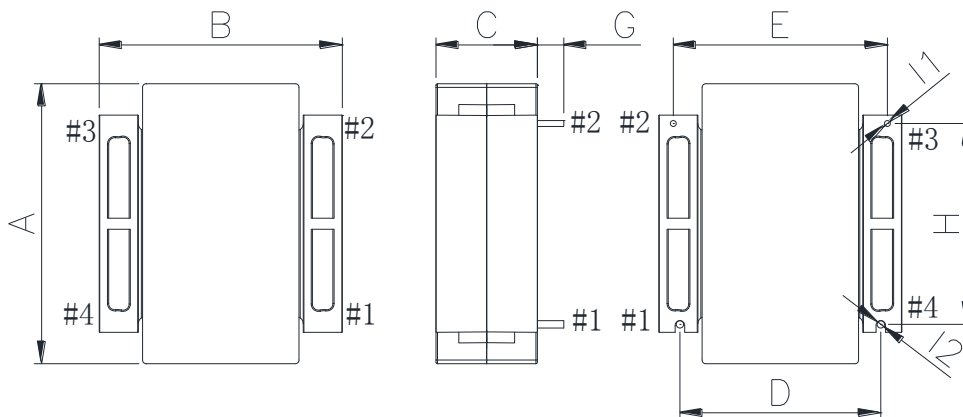
## Features

- ▶ High current
- ▶ Low profile
- ▶ Low magnetic loss
- ▶ RoHS compliant

## Applications

- ▶ Audio AMP, TV SMPS, Slim Adapter, AV equipment, digital consumer electronics

## Dimension (Unit:mm)



A	B	C	D		
39.0 Max.	34.0 Max.	14.0 Max.	27.35±0.5		
E	G	H	I1	I2	
29.15±0.5	3.6±0.3	27.4±0.5	0.8±0.1	1.0±0.3	

## Schematic Diagram



## Specifications

Part No.	Inductance ( $\mu$ H) $\pm 7\%$	DCR (m $\Omega$ ) Max.	Saturation Current(A)		Test Frequency (Hz)
			25 °c	100 °c	
CMI-MMPB383214-1750	175	120	12.7	10.5	100k

- Saturation Current : Depends on inductance saturation.  
(Inductance reduction from initial shall be under 20%)
- Test Condition : Temperature 20 °c  $\pm$  5 °c, Humidity 65%  $\pm$  20

Ilsan Sales Office (KOREA) +82)31-904-1444  
 Shenzhen Sales Office (CHINA) +86)755-8663-6929  
 Hungary Sales office (EUROPE) +36)30-913-7706

H.K Sales Office (HONGKONG) +852)2711-5551  
 LA Sales Office (USA) +1)866-446-3586

- You can also contact us by e-mail : [coilmaster@coilmaster.com](mailto:coilmaster@coilmaster.com)
- All specifications are subject to change without notice.
- Update date : 2018.12.06